

Sahadat Hossain
Sadik Khan
Golam Kibria

Sustainable Slope Stabilisation using Recycled Plastic Pins

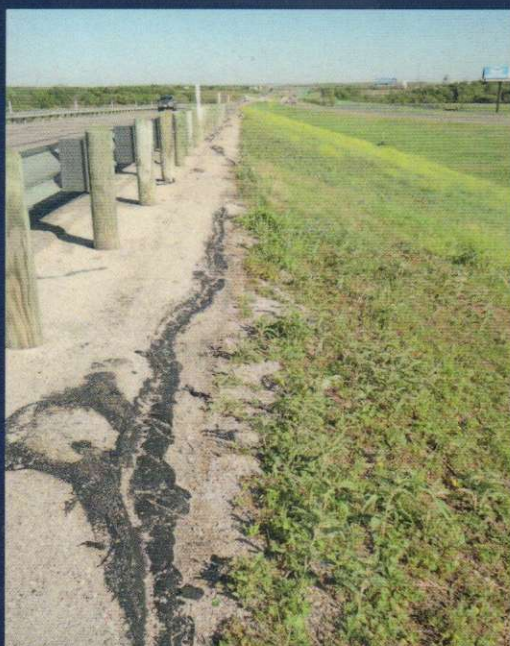


Table of contents

<i>Preface</i>	ix
<i>About the authors</i>	xiii
1 Introduction	1
2 Slope failure and stabilisation methods	7
2.1 Slope failure	7
2.2 Shallow slope failure	9
2.3 Variation of shear strength of highly plastic clay soil	10
2.4 Effect of rainfall on slope stability	18
2.5 Methods of repair of shallow slope failures	24
2.5.1 Slope rebuilding	24
2.5.2 Pipe piles and wood lagging	24
2.5.3 Geosynthetic/geogrid repair	25
2.5.4 Soil-cement repair	26
2.5.5 Repair with launched soil nails	26
2.5.6 Earth anchors	27
2.5.7 Geofoam	28
2.5.8 Wick drains	29
2.5.9 Retaining wall	29
2.5.9.1 Low masonry or concrete walls	30
2.5.9.2 Gabion walls	30
2.5.9.3 Shallow mechanically stabilised earth walls	32
2.5.10 Pin piles (micropiles)	32
2.5.11 Slender piles	33
2.5.12 Plate piles	33
2.5.13 Recycled plastic pins	34
3 Generation and recycling of plastics	35
3.1 Introduction	35
3.2 Generation of plastic waste	35
3.2.1 Global scene	35
3.2.2 US perspective	37

3.3	Management of plastic waste	37
3.3.1	Global scene	37
3.3.2	US perspective	39
3.3.3	Potential benefits of recycling plastic waste	40
3.4	Use of recycled plastics in different applications	41
3.5	Use of recycled plastic for manufacture of recycled plastic pins	42
4	Recycled plastic pins	43
4.1	Introduction	43
4.2	Manufacturing process of RPPs	43
4.3	Engineering properties of RPPs	44
4.3.1	Compressive and tensile strength	45
4.3.2	Flexural strength	46
4.3.3	Effect of weathering on long-term properties	47
4.3.4	Creep of RPPs	52
4.3.4.1	Creep of RPPs in slope stabilisation	53
4.4	Effect of environmental conditions	54
5	Design methods	61
5.1	Design methods	61
5.2	Limit state design method	62
5.3	Performance-based design approach	64
5.3.1	Limit failure of soil adjacent to RPPs	64
5.3.2	Limit resistance of RPPs	65
5.3.2.1	Limit horizontal displacement of RPPs	65
5.3.2.2	Limit maximum flexure for prolonged creep life	66
5.4	Determination of limit soil pressure	67
5.4.1	Calculation of limit soil pressure	67
5.4.2	Calculation of limit soil resistance	68
5.5	Limit horizontal displacement and maximum flexure of RPPs	71
5.6	Finalising the design chart	75
5.7	Calculation of factor of safety	76
5.7.1	Approach 1: conventional method of slices	76
5.7.1.1	Design steps for approach 1	78
5.7.2	Approach 2: infinite slope	78
5.7.2.1	Design steps for approach 2	81
5.8	Design recommendations	81
5.8.1	Extent of reinforcement zone	81
5.8.2	Material selection	81
5.8.3	Selection of RPP spacing	83
5.8.4	Minimum RPP length and RPP sections	83
5.8.5	Recommendations on design method	83
6	Construction methods	85
6.1	Early development of construction techniques	85

6.2	Types of equipment and driving tools for field installation	86
6.2.1	Davey Kent DK 100B drilling rig	86
6.2.2	Klemm 802 drill rig with KD 1011 percussion head drifter	87
6.2.3	Deere 200D with FRD F22 hydraulic hammer	88
6.2.4	Caterpillar CAT 320D LRR with CAT H130S hydraulic hammer	89
6.3	Field installation rate	90
6.4	Potential challenges of RPP installation	92
6.4.1	Slope steepness	92
6.4.2	Skilled labour	92
6.4.3	Connection between the hammer and pile head	93
6.5	Special installation techniques in adverse situations	93
7	Case studies	97
7.1	US highway 287 slope in Midlothian, Texas	97
7.1.1	Site investigation	98
7.1.2	Slope stability analyses at US 287 slope	100
7.1.3	Slope stabilisation using RPPs	101
7.1.4	Field installation	102
7.1.5	Instrumentation and performance monitoring	105
7.1.6	Performance of RPPs based on the results from instrumentation	109
7.1.7	Performance of the unreinforced northbound slope	115
7.2	Highway slope near Mockingbird Lane, Dallas, Texas	116
7.2.1	Site investigation	116
7.2.2	Slope stability analysis and design of slope stabilisation	118
7.2.3	Field installation	120
7.2.4	Field instrumentation and performance monitoring	123
7.3	Highway slope at SH 183, Fort Worth, Texas	124
7.3.1	Site investigation	124
7.3.2	Slope stability analysis and design of slope stabilisation scheme	125
7.3.3	Field installation	128
7.3.4	Field instrumentation and performance monitoring	132
7.4	Interstate 70 (I-70) Emma field test site in Columbia, Missouri (Loehr and Bowders, 2007)	133
7.4.1	Site investigation	134
7.4.2	Slope stabilisation scheme	135
7.4.3	Field installation	136
7.4.4	Instrumentation and performance monitoring	139
7.5	Interstate 435 (I-435)-Wornall Road Field test site, Missouri	145
7.5.1	Site investigation	145
7.5.2	Slope stabilisation scheme	146

