



Cover: Thwing Center  
Case Western Reserve University  
Cleveland, Ohio  
Architects: Don M. Hisaka & Associates  
Photographer: Thom Abel

**EDITOR**

WALTER F. WAGNER, JR., AIA

**EXECUTIVE EDITOR**

MILDRED F. SCHMERTZ, FAIA

**SENIOR EDITORS**

HERBERT L. SMITH, JR., AIA, Administration

ROBERT E. FISCHER

**ASSOCIATE EDITORS**

GRACE M. ANDERSON

DOUGLAS BRENNER

CHARLES K. GANDEE

BARCLAY F. GORDON

CHARLES K. HOYT, AIA

JANET NAIRN

ROGER YEE

**PRODUCTION EDITOR**

ANNETTE K. NETBURN

**DESIGN**

ALEX H. STILLANO, Director

ALBERTO BUCCHIANERI, Senior associate

ANNA-MARIA EGGER, Associate

MURIEL CUTTRELL, Illustration

J. DYCK FLEDDERUS, Illustration

JAN WHITE, Consultant

**EDITORIAL CONSULTANTS**

EDWARD LARRABEE BARNES, FAIA

JONATHAN BARNETT, AIA, Urban design

GEORGE A. CHRISTIE, JR., Economics

ERNEST MICKEL, Hon. AIA, Washington

PAUL RUDOLPH, FAIA

Foreign architecture

L'Architecture d'Aujourd'hui, Paris

**McGRAW-HILL WORLD NEWS**

MICHAEL J. JOHNSON, Director

9 domestic and 10

international news bureaus:

Bonn, Brussels, Buenos Aires,

London, Milan, Moscow, Paris,

Singapore, Tokyo, Toronto.

**SALES MANAGER**

MICHAEL J. MRVICA

**CIRCULATION DIRECTOR**

RICHARD H. DI VECCHIO

**BUSINESS MANAGER**

JOSEPH R. WUNK

**MARKETING SERVICES MANAGER**

CAMILLE H. PADULA

**ASSISTANT TO PUBLISHER**

ELIZABETH HAYMAN

**PUBLISHER**

PAUL B. BEATTY

**THE RECORD REPORTS**

**13 Editorial**

For the first issue of a brand-new year:

The inaugural of two new editorial efforts

**4 Letters/calendar**

**33 News in brief**

**35 News reports**

The winner of the 1981 AIA Gold Medal is Josep Lluís Sert of Cambridge, Massachusetts. A consultant to the FTC offers "judicial remedies" for battling building codes which stifle design innovation. The Moynihan Bill did not pass the 96th Congress, but a similar bill will be introduced in the new Congress. The U.S. Commerce Department releases its annual "industrial outlook" this month, forecasting the strengths and weaknesses of the 1981 construction market.

**47 Buildings in the news**

Library complex for the Jewish Theological Seminary in New York. A 46-story office and retail tower in Pittsburgh. A major corporate headquarters along the banks of the Brandywine River in Wilmington, Delaware.



**40 Design awards/competitions**

The inaugural of a new section, within the news pages, devoted to "the recognition of excellence." Covered this month: the Honor Awards programs of the Kansas City Chapter, the New England region, and the Michigan Society. Also: a calendar of upcoming competitions.

**51 Required reading**

*Architecture 1970-1980: A Decade of Change* by Jeanne Davern and the editors of ARCHITECTURAL RECORD, reviewed by Frederick Gutheim.

**ARCHITECTURAL BUSINESS**

**56 Photomontage broadens the spectrum of design**

Ithaca architect Jerome Sirlin illustrates the adaptability of photographic simulation at every stage of design, from schematics to detailed color and lighting studies.

**59 Building financing**

Rising short-term interest rates continue to discourage long-term lending, posing an obstacle to the ongoing building recovery.



## FEATURES

- 85 ABC television production facilities**  
Architects Kohn Pedersen Fox have designed three technical buildings to answer the needs of a complex technology and the needs of a very influential community in New York.



- 72 "The Troubled State of Modern Architecture"**  
The *New York Times* architecture critic Ada Louise Huxtable assays the stylistic revolution now in progress, and the offerings of its vanguard.

- 80 Suburban renewal**  
Two bright and imaginative transformations of "dumb and ordinary" buildings reinterpret the Spanish traditions of Miami in an altogether fresh way. The architects: Bernardo Fort-Brescia and Laurinda Spear of Arquitectonica International Corporation—a bright and imaginative young firm.

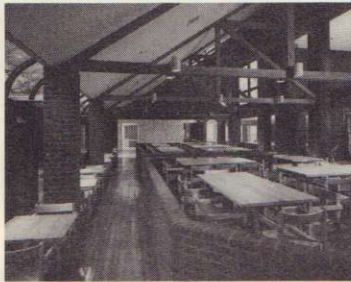
- 84 Profile of the graduating students: Conservative and on-track**  
The results of a survey of students in their final year of almost every architecture school pictures a group who are intent on becoming licensed, who want their own firm, who are strong on design (but not so strong on the nitty-gritty), and who are far from the frustrated and angry students of not so many years ago. A parallel survey of practitioners serves as a check on student perceptions and expectations.

## BUILDING TYPES STUDY 554

- 90 College Buildings**  
In the course of time, colleges find that their buildings, worn out by generations of students, grow decrepit, or that changing curricula change a building's utility. This study considers four examples of renovation and addition, all combining antiquated buildings and modern architecture with uninhibited *joie de vivre*.

- 90 Thwing Center**  
Case Western Reserve University  
Cleveland, Ohio  
Don M. Hisaka & Associates, architects

- 96 Donaldson Commons**  
Yale University  
New Haven, Connecticut  
Herbert S. Newman Associates, architects



- 100 Harriet Newhall Center**  
Mount Holyoke College  
South Hadley, Massachusetts  
Ericson Associates, architects

- 104 Hall of Languages**  
Syracuse University  
Syracuse, New York  
Sargent-Webster-Crenshaw & Folley, and Architectural Resources Cambridge Inc., architects

## ARCHITECTURAL ENGINEERING

- 108 Where does the energy really go?**  
Because no one really knows for sure, the Department of Energy funded a million-dollar study in a new 26-story office building in Newark, New Jersey to find out. A team headed by Tishman Research Corporation will study data on hvac and lighting energy usage acquired over eight seasons.

- 112 Office literature**

- 117 Product reports**

- 140 Classified advertising**

- 146 Architectural Record Bookshop**

- 154 Advertising Index**

- 157 Reader service inquiry card**

## NEXT MONTH IN RECORD

### Building Types Study: Urban Housing

Four projects that examine the ways in which developers, designers and lending institutions are learning to cope with higher and higher costs, and still provide housing—at least at the middle and upper ends of the economic spectrum—that capitalizes on the potentials of urban life.