



Cover: The John Fitzgerald Kennedy Library  
Columbia Point on Dorchester Bay,  
Boston, Massachusetts  
Architects: I. M. Pei & Partners  
Photographer: Nathaniel Lieberman

**EDITOR**

WALTER F. WAGNER, JR., AIA

**MANAGING EDITOR**

HERBERT L. SMITH, JR., AIA

**SENIOR EDITORS**

ROBERT E. FISCHER  
MILDRED F. SCHMERTZ, FAIA

**ASSOCIATE EDITORS**

GRACE M. ANDERSON  
BARCLAY F. GORDON  
CHARLES K. HOYT, AIA  
WILLIAM MARLIN  
JANET NAIRN

**ASSISTANT EDITOR**

CHARLES K. GANDEE

**PRODUCTION EDITOR**

ANNETTE K. NETBURN

**DESIGN**

ALEX H. STILLANO, Director  
ALBERTO BUCCHIANERI, Senior associate  
ANNA-MARIA EGGER, Associate  
MURIEL CUTTRELL, Illustration  
J. DYCK FLEDDERUS, Illustration  
JAN WHITE, Consultant

**CONTRIBUTING EDITOR**

GERALD ALLEN

**EDITORIAL CONSULTANTS**

EDWARD LARRABEE BARNES, FAIA  
JONATHAN BARNETT, AIA, Urban design  
GEORGE A. CHRISTIE, JR., Economics  
ERNEST MICKEL, Hon. AIA, Washington  
PAUL RUDOLPH, FAIA  
Foreign architecture  
L'Architecture d'Aujourd'hui, Paris

**McGRAW-HILL WORLD NEWS**

RALPH R. SCHULZ, Director  
9 domestic and 10  
international news bureaus:  
Bonn, Brussels, Buenos Aires,  
London, Milan, Moscow, Paris,  
Singapore, Tokyo, Toronto.

**CIRCULATION DIRECTOR**

RICHARD H. DI VECCHIO

**BUSINESS MANAGER**

JOSEPH R. WUNK

**DIRECTOR OF MARKETING SERVICES**

ELIZABETH HAYMAN

**PUBLISHER**

ROBERT G. KLIESCH

**EXECUTIVE DIRECTOR**

BLAKE HUGHES

**THE RECORD REPORTS**

**13 Editorial**

Interested in "better building through technological innovation and more rational regulation"? Who isn't?

**4 Letters/calendar**

**33 News in brief**

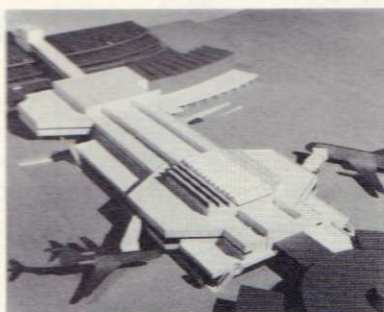
Short items of major national interest

**36 News reports**

New York City unveils I. M. Pei & Partners' design for a super-large convention and exposition center in Manhattan. The Department of Energy, in response to entreaty from the construction industry, extends the deadline for comments on its BEPS to April 25. The Museum of Modern Art exhibits fantastic buildings, both past and future, for Best Products showrooms.

**41 Buildings in the news**

International Passenger Terminal, San Francisco International Airport, California. Bus maintenance facility, Houston. Hyatt Regency Fort Worth Hotel, Texas. Grant Building, Atlanta. Harbor Loft Apartments, Lynn, Massachusetts. D & F Tower Offices, Denver.



Gerald Ratto

**67 Required reading**

*Design Competitions*  
by Paul Spreiregen FAIA,  
reviewed by Michael Seelig.

**ARCHITECTURAL BUSINESS**

**63 Design and real estate economics: a partnership for adaptive-use**

As we enter a new decade, the urban frontier is becoming increasingly more attractive to the development and investment communities. Due to current economic conditions, an increasing volume of real estate is being purchased for appreciation rather than a need for short-term cash flow. However, the opportunities for urban reinvestment without recourse to public subsidies will continue to be highly selective and subject to intensive scrutiny by knowledgeable investors. Real estate economist Mel Gamzon explores this evolving problem.

## FEATURES

### 81 Lighthouse on an era

The John Fitzgerald Kennedy Library, designed by I. M. Pei & Partners, illumines a profile of architectural courage over 15 years that would have impressed the 35th President's sense of history, politics, and art.

### 91 Conservation of County Courthouse in Michigan

The preservation of the Livingston County Courthouse in Howell, Michigan, is symbolic of the government and cultural continuity of this very small community, while an excellent design of combined restoration/rehabilitation. William Kessler and Associates are the architects.

### 97 Recalling familiar forms

Two houses designed by Connecticut architect Peter Woerner are derived from the traditional New England vernacular but, more important, they are imbued with interesting and welcome variations.



Robert Perron

### 103 The Douglas County Correctional Center by Dana Larson Roubal

Located in Omaha, Nebraska, this new facility has been designed as a prototype under various Federal programs for prison design across the country. It features a marked lack of visible restraints and a separation of offenders into like groups for rehabilitative purposes.

## BUILDING TYPES STUDY 451

### 109 Sports arenas

This building type continues to be active and continues to compete for the public's discretionary dollars. The designers of the three arenas in this study faced an especially broad array of problems and solved them with exemplary skill.

### 110 U.S. National Tennis Center Flushing Meadow, New York

Architect David Specter had just 10 months to provide American tennis with a new and comfortable home.

### 115 Special Events Center University of Texas, Austin, Texas

An exceptionally flexible facility designed by Crain/Anderson that successfully hosts a very long menu of events.

### 120 Olympic Center Lake Placid, New York

Hellmuth, Obata & Kassabaum's splendid solution to the problem of designing to the highest Olympic standards without creating a building so specialized and so expensive to operate that it cannot be used after the Games.



George Cserna

## ARCHITECTURAL ENGINEERING

### 125 Low-cost walk-on ceiling gives access to ballroom equipment

Because the space above the ballroom ceiling in an addition to the Hyatt Regency Chicago is crammed with air handlers, exhaust fans, sprinkler lines and other piping, convenient access for maintenance was required—in this case provided by a gypsum ceiling that cost half as much as catwalks.

### 127 Temporary floodgates protect a Houston hospital from a rainstorm's runoff

In 1976 Houston's Methodist Hospital Center suffered \$1.5 million damage and awkward operating conditions when runoff from a flash storm flooded passages and basements. The main remedy by Bovay Engineers was a series of demountable floodgates in front of below-grade ramps.

### 133 Product reports

### 135 Office literature

### 185 Classified advertising

### 188 Advertising index

### 191 Reader service inquiry card

## NEXT MONTH IN RECORD

### Building Types Study: Low-rise housing

In a period of altering national expectations, American architects (and developers) must look at multifamily housing with altered perceptions of economics, energy and available building sites. Recent low-rise housing uses formerly overlooked urban sites, obsolescent buildings for low-cost recycled apartments, compressed in-fill sites, and small-scaled mixed use of offices, stores and residence.