



Cover: The Calvary Baptist Church  
Detroit, Michigan  
Architects: Gunnar Birkerts and Associates  
Photographer: RETORIA, by T. Kitajima

**EDITOR**

WALTER F. WAGNER, JR., AIA

**MANAGING EDITOR**

HERBERT L. SMITH, JR., AIA

**SENIOR EDITORS**

ROBERT E. FISCHER

MILDRED F. SCHMERTZ, FAIA

**ASSOCIATE EDITORS**

GRACE M. ANDERSON

BARCLAY F. GORDON

CHARLES E. HAMLIN

CHARLES K. HOYT, AIA

WILLIAM MARLIN

JANET NAIRN

**PRODUCTION EDITOR**

ANNETTE K. NETBURN

**DESIGN**

ALEX H. STILLANO, Director  
ALBERTO BUCCHIANERI, Senior associate  
ANNA-MARIA EGGER, Associate  
MURIEL CUTTRELL, Illustration  
J. DYCK FLEDDERUS, Illustration  
JAN WHITE, Consultant

**CONTRIBUTING EDITOR**

GERALD ALLEN

**EDITORIAL CONSULTANTS**

EDWARD LARRABEE BARNES, FAIA  
JONATHAN BARNETT, AIA, Urban design  
GEORGE A. CHRISTIE, JR., Economics  
ERNEST MICKEL, Hon. AIA, Washington  
PAUL RUDOLPH, FAIA  
Foreign architecture  
L'Architecture d'Aujourd'hui, Paris

**McGRAW-HILL WORLD NEWS**

RALPH R. SCHULZ, Director  
9 domestic and 10  
international news bureaus:  
Bonn, Brussels, Buenos Aires,  
London, Milan, Moscow, Paris,  
Singapore, Tokyo, Toronto.

**CIRCULATION DIRECTOR**

RICHARD H. DI VECCHIO

**BUSINESS MANAGER**

JOSEPH R. WUNK

**DIRECTOR OF MARKETING SERVICES**

ELIZABETH HAYMAN

**PUBLISHER**

ROBERT G. KLIESCH

**EXECUTIVE DIRECTOR**

BLAKE HUGHES

## THE RECORD REPORTS

### 13 Editorial

On building awareness by architects of the new needs of our changing families

### 4 Letters/calendar

### 33 News in brief

Short items of major national interest.

### 34 News reports

The Bauhaus Archive, designed by Gropius and The Architects Collaborative, opens in West Berlin this month. The AIA forms a task force to study the design of long-span roofs. Denmark, with a long heating season and no fuel sources, concentrates on conservation and research. Buffalo's Prudential Building houses the Louis Sullivan Architecture Museum.

### 37 Human settlements

### 40 Buildings in the news

The Chicago Chapter AIA, honors 17 buildings in its awards program.



## ARCHITECTURAL BUSINESS

### 55 Legal perspectives

**Weighing your decision to settle, or defend against, liability claims**

Attorney Arthur T. Kornblut suggests a prudent evaluation of each claim, with an eye toward considering the interests of all involved in the defense: architect *and* insurer.

### 57 Office management

**Designing barrier-free toilet rooms within old and new buildings**

Another in a series of articles dealing with the new ANSI guidelines, this article by Edward Steinfeld focuses on the special design problems and code requirements concerning restrooms.

### 61 Building financing

**Value of nonresidential rehabilitation will double by mid-1980s**

According to economist Phillip E. Kidd, incentives now in effect will help bring the value of rehabilitation work to \$30 billion by mid-decade.



**FEATURES**

**81 The Federal Building, Courthouse in Fort Lauderdale, Florida**  
 William Morgan Architects (and joint-venture engineers H.J. Ross) have once again produced a public building with something for the public. And this time there is more than a park out of low building costs. There is a direction for planning in an emerging downtown.



**87 Two primary energy sources**  
 Gunnar Birkerts will have been in America 30 years this December. Two of his firm's recent works—the IBM Office Building in the nearby Detroit suburb of Southfield and the Calvary Baptist Church in Detroit—pack tightly together the philosophical and pragmatic forces that have informed his professional advancement.

**97 Round Table: Housing and community design for changing family needs**  
 The panelists—architects, planners, social scientists and writers—examined the architectural and planning consequences of changing needs and self perceptions of women and their families.

**105 Three restaurants. . .**  
 . . . To illustrate the commercial needs that can be met by architects' more diverse interior-design approaches, the reasoning behind the design of three restaurants is explored in detail—along with the general design approaches of the architects who produced them.

**106 The Whole Grain, Cleveland**  
 by Wudtke Watson Davis, Inc., architects

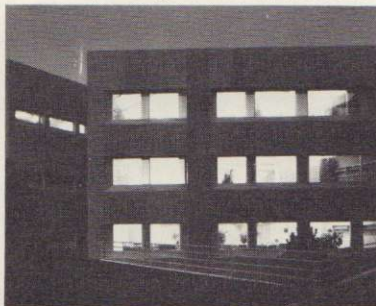
**108 The Rusty Scupper, Pittsburgh**  
 by Edmund Stevens Associates, architects

**110 In Season, Philadelphia**  
 by James Oleg Kruhly, architect

**BUILDING TYPES STUDY 537**

**111 Medical facilities**  
 Construction in this essential field is stable, with some promise for a slight increase in volume next year. There is more than a little promise, however, about the general attitude of architects toward the positive challenges of design in the health-care field; there is, in fact, a marked upsurge in design quality amidst this world of endless practical and programmatic limitations.

**112 Baldwin Building for Community Medicine, The Mayo Clinic, Rochester, Minnesota**  
 Skidmore, Owings & Merrill, architects



**120 Center for Preventive and Rehabilitative Medicine and Diagnostic Treatment Center, Daniel Freeman Memorial Hospital, Inglewood, California**  
 Bobrow/Thomas and Associates, architects

**124 Butler Hospital, Providence, Rhode Island**  
 The Hiller Group, architects

**ARCHITECTURAL ENGINEERING**

**127 New roofing systems show promise for both new roof and reroofing applications**  
 The good roof was once as common as an open gasoline station, but changes in materials, architectural designs and labor have forced a rethinking of the process of waterproofing a building. Single-ply systems, cold-applied systems, inverted roof systems and others now offer a large array of new approaches for the architect.

**137 Product reports**

**139 Office literature**

**147 Office notes**

**181 Required reading**

**195 Classified advertising**

**198 Advertising index**

**201 Reader service inquiry card**

**NEXT MONTH IN RECORD**

**Building Types Study: Campus design**  
 Small community colleges tend to get built over a relatively short time span, which sometimes gives them a unity of design that is ordinarily found only in single buildings. Three of the campuses to be shown are the work of Anthony J. Lumsden of DMJM, and represent his current concern with what he calls "the extrusion esthetic." The fourth and largest community college is the work of four firms and took ten years to design and build. Its unity is the result of careful collaboration and discipline among its architects.