

IBM World Trade Americas/Far East Corporation headquarters Mt. Pleasant, New York
Architect: Edward Larrabee Barnes
Photographer: Joseph W. Molitor

EDITOR

WALTER F. WAGNER, JR., AIA

MANAGING EDITOR

HERBERT L. SMITH, JR., AIA

SENIOR EDITORS

ROBERT E. FISCHER
MILDRED F. SCHMERTZ, AIA

ASSOCIATE EDITORS

GERALD ALLEN
GRACE M. ANDERSON
BARCLAY F. GORDON
CHARLES E. HAMLIN
CHARLES K. HOYT, AIA
WILLIAM MARLIN

ASSISTANT EDITOR

JANET NAIRN

PRODUCTION EDITOR

ANNETTE K. NETBURN

DESIGN

ALEX H. STILLANO, Director
ALBERTO BUCCHIANERI, Associate
ANNA-MARIA EGGER, Assistant
MURIEL CUTTRELL, Illustration
J. DYCK FLEDDERUS, Illustration
JAN WHITE, Consultant

EDITORIAL CONSULTANTS

EDWARD LARRABEE BARNES, FAIA
JONATHAN BARNETT, AIA, Urban design
GEORGE A. CHRISTIE, JR., Economics
ERNEST MICKEL, Hon. AIA, Washington
PAUL RUDOLPH, FAIA

Foreign architecture:
L'Architecture d'Aujourd'hui, Paris

McGRAW-HILL WORLD NEWS

RALPH R. SCHULZ, Director
9 domestic and 10
international news bureaus:
Bonn, Brussels, Buenos Aires,
London, Milan, Moscow, Paris,
Singapore, Tokyo, Toronto.

SALES MANAGER

LOUIS F. KUTSCHER

CIRCULATION DIRECTOR

HUGH S. DONLAN

ASSISTANT BUSINESS MANAGER

JOSEPH R. WUNK

ASSISTANT TO THE PUBLISHER

ELIZABETH HAYMAN

PUBLISHER

BLAKE HUGHES

THE RECORD REPORTS

13 Editorial

New year, new Administration
new hope, new concerns

4 Letters/calendar

35 News briefs

Short items of major
national interest.

36 News reports

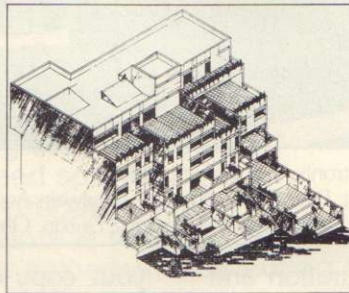
Trades unions, contractors and HUD
develop agreements to foster
urban housing rehabilitation
through a combination of lower wages
and funding commitments.

A committee of construction designers,
businessmen and labor leaders
propose a National Museum
of the Building Arts in Washington.
As a first step toward a Federal
Office of Construction, the
Commerce Department will create a
Construction Program and Policy
Coordination Committee.

39 Human settlements: world news

42 Buildings in the news

Gheytaarieh Apartments, Tehran, Iran.
Hotel and Conference Center,
Doha, Qatar. Souk, Salalah, Oman.



45 Required reading

173 Office notes

ARCHITECTURAL BUSINESS

**75 Construction management,
in Miami test, saves \$1.5 million**

In direct comparison with a
high school built according to
traditional design and contracting,
a new prototype for the Dade
County School District resulted in
substantial savings without
sacrificing quality.

81 Building costs

Renovation and remodel figures
are included in the *1977 Dodge
Manual for Building Construction
Pricing and Scheduling*.

**83 Building activity
Tax cuts and Federal spending needed
to revive economic recovery in 1977**

According to George A. Christie,
chief economist for McGraw-Hill
Information Systems Company, the new
Carter Administration may use two
options to stimulate a sluggish
economic recovery.

FEATURES

129 Robin Hood Dell West Philadelphia, Pennsylvania MacFadyen/De Vido architects

In Philadelphia's Fairmount Park, the largest and most extensively equipped of the country's new outdoor music facilities. Under its sheltering canopy, 5,000 music lovers can enjoy concerts, opera and ballet.



© Edmund H. Stoecklein

133 "An Architecture for People and not for Things"

John Portman describes the principles that underlie his design. He organizes his discussion around such topics as order and variety simultaneously achieved, movement, light, color and materials, water, nature, people watching people, and shared space.

141 A low profile for IBM

Architect Edward Larrabee Barnes has designed a headquarters building for the IBM World Trade Americas/Far East Corporation which responds to and fits into the landscape in an unusually effective manner.

147 Delightful weekend retreat at The Sea Ranch

Unpretentious in appearance, this house is characteristic of Donald Jacob's concern for and manipulation of form, light and spatial arrangement through subtleties in design to achieve an exciting interior.

BUILDING TYPES STUDY 497

101 Record Interiors of 1977

101 5th Street Station
Philadelphia, Pennsylvania
Ueland and Junker, architects

104 Worcester Bank Restaurant
Worcester, Massachusetts
Roche Dinkeloo and Associates, architects

106 Architects' own offices
Watertown, Massachusetts
Crissman & Solomon, architects

108 Squash/1
Mamaroneck, New York
Gordon/Spencer, architects

110 Private apartment
Elkins Park, Pennsylvania
Stern & Hagmann, architects



© Edmund H. Stoecklein

114 Architects' own offices
Minneapolis, Minnesota
The Design Consortium, architects

116 Leisure World Electronics
Baraboo, Wisconsin
Jack Fleig, architect

118 Providence Journal Publishing Company
Providence, Rhode Island
Warren Platner Associates, architects

122 Relta Steamship Company headquarters
Long Beach, California
Hugh Gibbs & Donald Gibbs Architects and SLS-Environetics, space planners/interior designers

126 Private apartment
New York, New York
Ulrich Franzen, architect

ARCHITECTURAL ENGINEERING

151 Technical news and research

Four different engineering techniques that either save money, or save money and energy, or that save money and produce interesting architecture. Four stories this month include: 1) a low-cost interstitial floor system of light-gage steel, 2) design aids for daylight, 3) off-peak thermal storage for a hospital, and 4) an unusual hypar roof for a zoo.

159 Product reports

161 Office literature

220 Record impressions

226 Classified advertising

228 Advertising index

231 Reader service inquiry card

NEXT MONTH IN RECORD

Building Types Study: Recreation

A recent proliferation of interest in athletics (and physical fitness) has produced in many of the nation's cities an almost new type of construction: the well-designed in-town recreational facility. Whether a club or a fee-by-the-hour arrangement and whether for squash, tennis, handball, swimming, skating or whatever, these new installations are proving commercially viable, and are using design as an extra incentive for their use. In February the RECORD will show a wide range of such facilities and explain the reasons for their functional and visual success.