

Cover: Eastwood, Roosevelt Island  
New York, New York  
Architects: Sert, Jackson Associates  
Photographer: © Steve Rosenthal

**EDITOR**

WALTER F. WAGNER, JR., AIA

**MANAGING EDITOR**

HERBERT L. SMITH, JR., AIA

**SENIOR EDITORS**

ROBERT E. FISCHER  
MILDRED F. SCHMERTZ, AIA

**ASSOCIATE EDITORS**

GERALD ALLEN  
GRACE M. ANDERSON  
BARCLAY F. GORDON  
CHARLES E. HAMLIN  
CHARLES K. HOYT, AIA  
WILLIAM MARLIN

**ASSISTANT EDITOR**

JANET NAIRN

**PRODUCTION EDITOR**

ANNETTE K. NETBURN

**DESIGN**

ALEX H. STILLANO, Director  
ALBERTO BUCCHIANERI, Associate  
ANNA-MARIA EGGER, Assistant  
MURIEL CUTTRELL, Illustration  
J. DYCK FLEDDERUS, Illustration  
JAN WHITE, Consultant

**EDITORIAL CONSULTANTS**

EDWARD LARRABEE BARNES, FAIA  
JONATHAN BARNETT, AIA, Urban design  
GEORGE A. CHRISTIE, JR., Economics  
ERNEST MICKEL, Hon. AIA, Washington  
PAUL RUDOLPH, FAIA  
Foreign architecture:  
*L'Architecture d'Aujourd'hui*, Paris

**McGRAW-HILL WORLD NEWS**

RALPH R. SCHULZ, Director  
9 domestic and 10  
international news bureaus:  
Bonn, Brussels, Buenos Aires,  
London, Milan, Moscow, Paris,  
Singapore, Tokyo, Toronto.

**SALES MANAGER**

LOUIS F. KUTSCHER

**CIRCULATION MANAGER**

HUGH S. DONLAN

**ASSISTANT TO THE PUBLISHER**

ELIZABETH HAYMAN

**PUBLISHER**

BLAKE HUGHES

**THE RECORD REPORTS**

**13 Editorial**

Some random thoughts on  
celebrations, sailboats and cities

**4 Letters/calendar**

**33 News in brief**

Short items of major  
national interest.

**35 News reports**

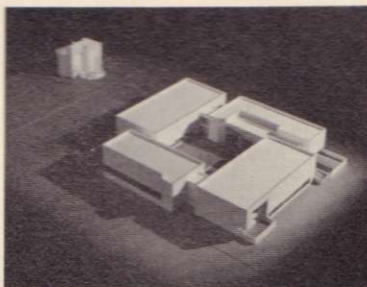
Jimmy Carter's stands on new policies  
in numerous areas of concern to the  
construction industry. Developments  
concerning proposed architectural  
recertification programs. Buffalo,  
New York gets OK for new transit system,  
but Denver gets rejection by Urban  
Mass Transportation Administration.

**36 Human settlements: world news**

A report on the United Nations  
Conference on Human Settlements  
in Vancouver, British Columbia.

**39 Buildings in the news**

State Compensation Insurance Fund  
Home Office Building, San Francisco.  
Miller Brewing Company's Corporate  
Headquarters, Milwaukee. R. J. Reynolds  
Industries, Inc. foreign operations  
headquarters, Winston-Salem, N.C.  
Charleston, S.C. museum (below). Indiana  
University Art Museum Building,  
Bloomington, Ind. Wallraf-Richartz  
Museum, Cologne, Germany.



© Steve Rosenthal

**ARCHITECTURAL BUSINESS**

**53 Planned parenthood: how to beget  
and raise a branch or subsidiary.**

Bradford Perkins, of Llewelyn-Davies  
Associates, outlines the conditions  
and guidelines for expanding  
a firm's services and locations.

**59 Building costs**

Low-rise apartment costs  
from Dodge Building Costs Services.

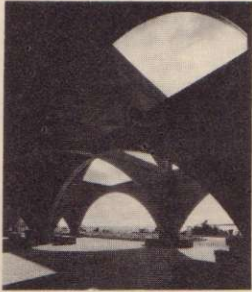
**61 Building activity**

The Dodge/Sweet's Construction  
Outlook: A mid-year update by  
George A. Christie, vice president  
and chief economist for McGraw-Hill  
Information Systems Company,  
offers an outlook that puts greater  
emphasis on non-residential  
buildings and apartments.

## FEATURES

### 69 The work of Fumihiko Maki

The National Aquarium at Marine Life Park on Okinawa (page 70), the Kuragaik Commemorative Hall of the Toyota Company near Nagoya (page 74), and the Osaka Prefectural Sports Center (page 78), derive formal properties from the physical facts of environment, disclosing the theoretical source of one of architecture's most compelling minds. With an essay by architect Heather Willson Cass.



Kaneaki Monma

### 81 The Los Angeles 12

A new traveling exhibition about Los Angeles and the work of twelve distinguished Los Angeles architects shows that—in both thought and deed—architecture is alive and well in the city of angels.

### 91 Hunter Museum of Art Chattanooga, Tennessee

Perhaps too few modern-day buildings can simultaneously conjure an image of romance and still stand as legitimate architecture. But architects Derthick & Henley's just completed museum expansion accomplishes just such a feat by a successful visual balance of nature, an old mansion, and a large new structure. And the result shows what such a sympathetic blend can produce: a complex without stylistic gimmickry—and with a sense of place.

### 95 Pre-engineered post offices rise in Southeast

An earnest effort by the U.S. Postal Service to get higher quality design at a cost it can afford has resulted in a new prototypical structure. Designed by LBC&W of South Carolina, the new building has already been adapted to several sites, and others will follow.

## BUILDING TYPES STUDY 491

### 100 Design alternatives for low-to-moderate-income urban housing

High-rise, high-density housing does not have to be as inhumane as too many critics are now saying. If combined with medium- and low-rise elements and thoughtfully designed to a program that incorporates a broad range of community facilities, it can be very humane indeed.

### 102 Eastwood, Roosevelt Island, New York City

Designed by Sert, Jackson, Associates, it is a highly experimental and innovative new-town-in-town.

### 108 Riverview, Yonkers, N.Y.

Also by Sert, Jackson, Associates, it is designed as a prototype for the development of other sites in Yonkers.



© Steve Rosenthal

### 110 Twin Parks East, Bronx, N.Y.

Designed by Giovanni Pasanella Associates, it incorporates two schools and a center for the aged.

### 114 Mott Haven Infill, South Bronx, N.Y.

Designed by the firm of Ciardullo Ehmann, it represents a low-rise, lost-cost approach.

## ARCHITECTURAL ENGINEERING

### 123 Product reports

### 125 Office literature

### 152 Classified Advertising

### 154 Advertising Index

### 157 Reader Service Inquiry Card

## COMING IN MID-AUGUST

The third annual issue of

Engineering for Architecture featuring:

- 1) Twenty-six pages of case histories demonstrating effective collaboration between architect and engineer;
- 2) Consultants to consultants. Interviews with a number of specialized consultants such as wind-tunnel experts, energy specialists, illuminating specialists;
- 3) Engineering Options for the Architect: examples from the work of Gensert Peller Mancini Associates showing how early studies by this structural engineer give his clients alternatives in terms of both design and economics.
- 4) Ideas: twelve pages devoted to new developments in solar energy design plus inventive solutions in other fields;
- 5) a report on RECORD's Round Table: The Technical Backup for Architecture;
- 6) Lighting: No Longer the Stepchild of Architecture. Impressive solutions to effective lighting with low energy usage.

## NEXT MONTH IN RECORD

### Building Types Study: Public Administration Buildings— How well are we designing for the public realm?

The question of the quality and the efficiency of our public architecture has lately become a subject of increasing concern both to architects and to governmental agencies. The September Building Types Study will present some of the most notable successes.