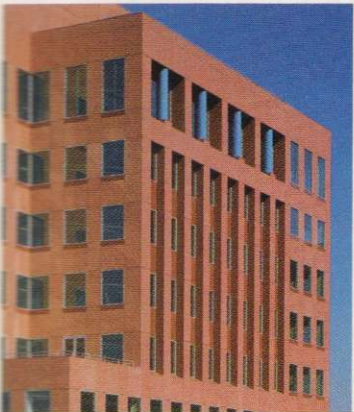




page 78



page 87



page 105



page 126

BUILDING TECHNOLOGY

- 105 **DESIGNING THE SUPER-THIN NEW BUILDINGS**
Very tall, very slender buildings represent the cutting edge of skyscraper design.
- 110 **ASBESTOS: STILL A DARK CLOUD OVER CONSTRUCTION**
It's in thousands of buildings, and the trend to management "in-place" over removal signals an ongoing role for architects.
- 119 **COMPUTER TECHNOLOGY**
Drafix Windows Versus PowerDraw for the Mac. Which of these feature-laden 2-D CAD packages is for your firm? By Steven S. Ross
- 126 **NEW PRODUCTS**
Window-CAD in Use: A look at the architectural wood-window industry's product-specific CAD tools.
- 129 **Site-Specific Solutions:** Innovations in glass, metal, and stone.

PRACTICE

23 PRACTICE NEWS

- 27 **Making Practice Courses Relevant.** A plan to ignite student interest in a dull (?) but vital topic. By Robert Gutman
- 30 **Working With Photographers.** How to ensure that project photography is done right. By Nicholas Polites
- 35 **Building a Successful Practice.** Part two of a series shows young firms how to go from inception to maturity. By Bradford Perkins
- 38 **Construction Costs Calm on the Surface.** While there is stability on national average, a look at regional variations reveals underlying shifts.
- 39 **Taming the Facts.** Five ways to improve information management and thus productivity and quality control. By David Kent Ballast
- 43 **How to Visit That Computer Trade Show.** By Steven S. Ross

45 PROFILE

Playing the Field. Janet Marie Smith, vice president of new stadium planning and development for the Baltimore Orioles, takes a swing at downtown redevelopment. By David Masello

47 BOOK REVIEWS

The Enduring Legacy of Mies van der Rohe.

- | | |
|------------------------|----------------------------|
| 4 Letters | 144 Classified Advertising |
| 15 Design News | 145 Manufacturers' Sources |
| 53 Editorial | 148 Advertising Index |
| 132 Product Literature | 149 Reader Service Card |
| 142 Calendar | |

COVER: Las Vegas Library/Discovery Museum, Las Vegas, Nevada;
Antoine Predock, Architect
Photographer: ©Timothy Hursley

CONTENTS

Università degli Studi di Trento
Sistema Bibliotecario di Ateneo
BIBLIOTECA DI INGEGNERIA
via Mesiano, 77 I-38123 TRENTO
Tel.: 0461 281956, Fax: 0461 281918
bibliotecaingegneria@unitn.it

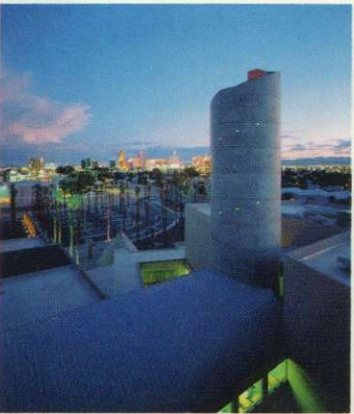
FEATURES



page 54



page 62



page 68



page 76

54 **STRUCTURAL DYNAMICS**

Santiago Calatrava's technical virtuosity and sculptor's eye bring stirring form to a Zurich railroad station.

62 **URBAN DELIGHT**

A 14-acre "new town" sensitively inserted into San Diego's Hillcrest has made a distinctive neighborhood even better.

68 **DOWN THE STRIP**

The stark sandstone and concrete shapes of Antoine Predock's Las Vegas Library/Discovery Museum seem far removed from the neon-encrusted hotels and casinos that dominate The Strip.

76 **ON THE THRESHOLD**

Leo J. Blackman's tiny church vestibule in New York City makes a smooth transition from outdoors to indoors, and medieval to modern.

78 **NEW FRONTIER**

Ettore Sottsass has in a long career filled three roles—industrial designer, interior designer, and architect. Now in his eighth decade, the Austrian-born Milan-based Sottsass has completed his first house in, of all places, rural Colorado.

BUILDING TYPES STUDY 685

87 **HIGH-RISE OFFICE BUILDINGS: HIGH-RISK HIGH RISES**

Although a weakening economy means fewer spec-office commissions, developers are beginning to recognize the marketing benefits of first-rate architecture.

90 **Good Taste:** Center West, Los Angeles, California; Mitchell/Giurgola Architects.

94 **Good Connections:** AT&T Corporate Center, Chicago, Illinois; Skidmore, Owings & Merrill, Architects.

98 **Good Manners:** 125 Summer Street, Boston, Massachusetts; Kohn Pedersen Fox Associates, Architects.