

FEATURES

99 The Kennedy School of Government: A purposefully non-heroic new gateway to Harvard

This new landmark, as a monument to the late President John F. Kennedy, is an immensely public building. It is also a place for quiet individual research. Its architects, Architectural Resources Cambridge Inc., have skillfully solved this complicated program with a structure which was one of the most quickly erected and cost effective in recent Harvard history.

107 Cincinnati Concourse

Louis Sauer's wonderful urban park that opens up Cincinnati's riverfront to citizens of all ages and interests.



113 Francis Mah house

Called by the architect "a house within a house" this double-shelled structure provides grand spaces at low cost. And the system provides some new thoughts on passive solar heating.

117 Mervyn's headquarters in California

These colorful high-tech interiors provide an appropriate environment for an unusual mix of industrial and clerical work.

121 Trident Submarine Training Facility

Designed by the joint venture team of Tracey-Brunstrom/Ewing/Warnecke, this award-winning building is the newest Navy training center. A stringent criteria that necessitated an incredibly massive, internally complex structure that could easily have negated good design was sensitively molded into an environment conducive to learning and a showpiece for the Navy.

BUILDING TYPES STUDY 532

127 Schools

In spite of continuing reports that the student population is declining, schools still represent a lively segment of the construction industry today, having increased in dollar value in 1978 and promising to increase further in 1979, giving form to current ideas about educational theory. Refinement, rather than revolution, seems to be the key to these ideas, resulting in buildings that are solid but up-to-date, workable but also innovative.

128 Cumberland Regional High School Seabrook, New Jersey

Armstrong Jordan Pease, architects



132 Barnstable Middle School Hyannis, Massachusetts

Caudill Rowlett Scott, architects

134 Blackstone Square Elementary School Boston, Massachusetts

Stull Associates, architects

136 Pine Bluff High School Pine Bluff, Arkansas

Caudill Rowlett Scott, architects

138 Tri-Center Elementary School Neola, Iowa

Dana Larson Roubal and Associates, architects

140 Mayport Junior High School Atlantic Beach, Florida

Freedman, Clements and Rumble, architects

ARCHITECTURAL ENGINEERING

141 Skylights: materials and details for ambience and utility

Architects increasingly are using skylights to humanize interior spaces. But also they are exploring applications to save energy through daylighting. Manufacturers have refined their details to allow freedom in design while also keeping water out. Still to be achieved, however, is agreement within the industry on what constitutes "safe" glazing for occupied spaces, though a national committee hopes to have answers soon.

153 Product reports

154 Office Literature

208 Required reading

219 Semi-annual index

212 Classified advertising

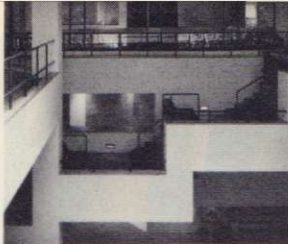
221 Advertising index

227 Reader service inquiry card

NEXT MONTH IN RECORD

Building Types Study: Transportation facilities

In July, RECORD will focus on the key issue of mass transportation in the U.S. More than any of the active design and construction areas today, transit facilities as a building type has been lumbering along at its own pace, often under-rated in importance, with great fanfare only at the completion of a single station. There is, however, some kind of transit work going on in almost every major city and in many smaller ones, each with architect involvement. As to be expected, there is a tremendous variety of work—from train stations to subway stations to transit malls to maintenance buildings to bus systems—predominantly funded by the Urban Mass Transit Association. The newest concepts in transit design will be explored and each area of work will be represented.



Cover: Kennedy School of Government
Harvard University, Cambridge, Massachusetts
Architects: Architectural Resources Cambridge, Inc.
Photographer: © Nick Wheeler

EDITOR

WALTER F. WAGNER, JR., AIA

MANAGING EDITOR

HERBERT L. SMITH, JR., AIA

SENIOR EDITORS

ROBERT E. FISCHER
MILDRED F. SCHMERTZ, FAIA

ASSOCIATE EDITORS

GERALD ALLEN
GRACE M. ANDERSON
BARCLAY F. GORDON
CHARLES E. HAMLIN
CHARLES K. HOYT, AIA
WILLIAM MARLIN
JANET NAIRN

PRODUCTION EDITOR

ANNETTE K. NETBURN

DESIGN

ALEX H. STILLANO, Director
ALBERTO BUCCHIANERI, Senior associate
ANNA-MARIA EGGER, Associate
MURIEL CUTTRELL, Illustration
J. DYCK FLEDDERUS, Illustration
JAN WHITE, Consultant

EDITORIAL CONSULTANTS

EDWARD LARRABEE BARNES, FAIA
JONATHAN BARNETT, AIA, Urban design
GEORGE A. CHRISTIE, JR., Economics
ERNEST MICKEL, Hon. AIA, Washington
PAUL RUDOLPH, FAIA
Foreign architecture
L'Architecture d'Aujourd'hui, Paris

McGRAW-HILL WORLD NEWS

RALPH R. SCHULZ, Director
9 domestic and 10
international news bureaus:
Bonn, Brussels, Buenos Aires,
London, Milan, Moscow, Paris,
Singapore, Tokyo, Toronto.

SALES MANAGER

ROBERT G. KLIESCH

CIRCULATION DIRECTOR

RICHARD H. DI VECCHIO

BUSINESS MANAGER

JOSEPH R. WUNK

DIRECTOR OF MARKETING SERVICES

ELIZABETH HAYMAN

PUBLISHER

BLAKE HUGHES

THE RECORD REPORTS

13 Editorial

Now is a good time for all good architects to submit your work for any of three upcoming issues of RECORD

4 Letters/calendar

33 News in brief

Short items of major national interest.

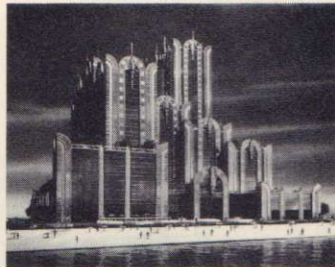
34 News reports

AID proposes a program of grants for American A-E firms performing feasibility studies for overseas projects. The Office of Federal Procurement Policy considers new rules for contracting government work to private firms. Pulitzer-prize-winning architectural critic Paul Gapp likes architecture that "fits into the city fabric." The U.S. Postal Service will issue the first block of stamps in its American Architecture Series on June 4.

37 Human settlements: world news

39 Buildings in the news

Fountain Square South, Cincinnati. Vista International Hotel, New York City. Ritz Hotel and Casino, Atlantic City. The Society of American Registered Architects confers its Gold Ribbon Awards of Excellence.



© Louis Checkman

ARCHITECTURAL BUSINESS

65 Building activity

White collar employment: impetus behind the office building boom

This timely report focuses on the blend of cyclical and structural economic forces affecting the current resurgence in office building.

67 Legal perspectives

Architectural licensing laws can impact design/build projects

Attorney Arthur T. Kornblut describes recent court cases illustrating the consequences of non-architects contracting with clients for professional services.

69 Construction management

A partial guide to painless CM projects: Part II

Concluding a two-part article, San Francisco architects Herbert McLaughlin and Cynthia Ripley take up the architect-CM working relationship.

73 Office management

Establishing an expatriate policy for overseas employees

As the overseas markets for U.S. design services have grown in recent years, so has the need to deal equitably with employees living abroad. Atlanta architect Scott W. Braley offers some guidelines for setting up a thorough expatriate policy.

77 Building costs

A guide to investment tax credit and component depreciation

McGraw-Hill's Cost Information Systems Division now provides architects and their clients with help in maximizing capital development tax credit on building projects.

