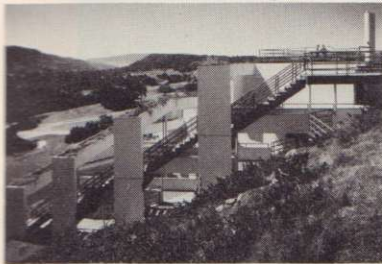


## FEATURES

**99 Boettcher Concert Hall at the Denver Center for the Performing Arts**  
Designed by architects Hardy Holzman Pfeiffer Associates with acoustics by Christopher Jaffe, it is the first 360-degree "surround hall" in the United States. It is highly original in concept and has been executed with great style.

**111 The Ojai Valley Inn Ojai, California**  
The Ojai Valley Inn has a new building that seems hardly to be there at all. On a site with both space and contextual limitations, architects Peter Gluck and Associates have produced a wonderful addition to the hotel that nestles under a hill, and belies its strong physical presence.



Carlos von Frankenberg

**117 Design in the Spirit of Islam: The Aga Khan Award for Architecture**  
The Aga Khan has established an award program designed to encourage Muslim leaders and their architects and planners to begin to pay more attention to Islamic beliefs and traditions as they design new environments in response to change.

**125 Quiet please!**  
House projects are open invitations to architects to try out their formal and theoretical ideas and then announce them with bated breath to a waiting world. By contrast, James Coote, who is an architect and a teacher in Austin, has made a place for himself that addresses the equally taxing problem of being not a "statement" but merely a house.

**129 A cast of characterizations for a playhouse on Cape Cod**  
A charette-style design competition for the Provincetown Playhouse-On-The-Wharf and Eugene O'Neill Archival Center breaks ground for a closer relationship between architectural values and community concerns.

## BUILDING TYPES STUDY 528

**139 Three office buildings**  
Office building will be one of the most active areas for design and construction this year. A boom in this area is predicted, now that an earlier surplus of office space has become a shortage. Three outstanding examples of office buildings are shown.

**140 Equitable Life Assurance Society Southern Service Center Charlotte, North Carolina**  
Wolf Associates, architects



©ESTO

**144 Sun Company, Inc. Corporate Headquarters Radnor, Pennsylvania**  
John Carl Warnecke, FAIA, architects

**150 Office at 1050 Massachusetts Avenue Cambridge, Massachusetts**  
Cambridge Seven Associates, Inc. architects

## ARCHITECTURAL ENGINEERING

**106 In a surround-type concert hall, the atypical shape raised a host of atypical engineering problems.**  
Acoustician Christopher Jaffe developed special ceiling reflectors and called for close-in balconies to get a "classic" sound in non-traditional Boettcher Hall. Lighting/stage consultants Jules Fisher and Paul Marantz had to consider the flexible-use requirements of the hall, and design the lighting to display the room or focus the audience's attention on the stage. And because tiers of seats are totally asymmetrical (laid out on eight different arcs), engineers KKBNA had to develop a radial column plan with eight different centers.

**157 Product reports**

**159 Office literature**

**210 Office notes**

**224 Classified advertising**

**234 Advertising index**

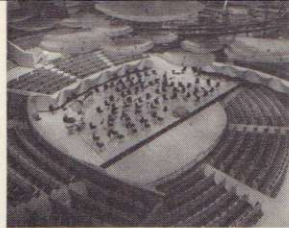
**237 Reader service inquiry card**

## NEXT MONTH IN RECORD

### Building Types Study:

#### Theaters

New theatrical uses are being found for old theaters these days and three of the four buildings to be shown in the April study are excellent examples of recycling for re-use. Two of these theaters will be analyzed by the noted theater designer George C. Izenour who was the consultant for their remodelings. He will contrast the two theaters in terms of their visual and acoustic environments and styles of theatrical performance. The fourth theater to be included has been selected for its use of the most advanced building technology to meet its acoustic and functional needs.



Cover: Boettcher Concert Hall at the Denver Center for the Performing Arts  
Architects: Hardy Holzman Pfeiffer Associates  
Photographer: Norman McGrath

**EDITOR**

WALTER F. WAGNER, JR., AIA

**MANAGING EDITOR**

HERBERT L. SMITH, JR., AIA

**SENIOR EDITORS**

ROBERT E. FISCHER

MILDRED F. SCHMERTZ, FAIA

**ASSOCIATE EDITORS**

GERALD ALLEN

GRACE M. ANDERSON

BARCLAY F. GORDON

CHARLES E. HAMLIN

CHARLES K. HOYT, AIA

WILLIAM MARLIN

JANET NAIRN

**PRODUCTION EDITOR**

ANNETTE K. NETBURN

**DESIGN**

ALEX H. STILLANO, Director

ALBERTO BUCCHIANERI, Senior associate

ANNA-MARIA EGGER, Associate

MURIEL CUTTRELL, Illustration

J. DYCK FLEDDERUS, Illustration

JAN WHITE, Consultant

**EDITORIAL CONSULTANTS**

EDWARD LARRABEE BARNES, FAIA

JONATHAN BARNETT, AIA, Urban design

GEORGE A. CHRISTIE, JR., Economics

ERNEST MICKEL, Hon. AIA, Washington

PAUL RUDOLPH, FAIA

Foreign architecture

L'Architecture d'Aujourd'hui, Paris

**McGRAW-HILL WORLD NEWS**

RALPH R. SCHULZ, Director

9 domestic and 10

international news bureaus:

Bonn, Brussels, Buenos Aires,

London, Milan, Moscow, Paris,

Singapore, Tokyo, Toronto.

**SALES MANAGER**

ROBERT G. KLIESCH

**CIRCULATION DIRECTOR**

RICHARD H. DI VECCHIO

**BUSINESS MANAGER**

JOSEPH R. WUNK

**DIRECTOR OF MARKETING SERVICES**

ELIZABETH HAYMAN

**PUBLISHER**

BLAKE HUGHES

**THE RECORD REPORTS**

**13 Editorial**

Why the changing housing market means marketing opportunities for architects

**4 Letters/calendar**

**33 News in brief**

Short items of major national interest.

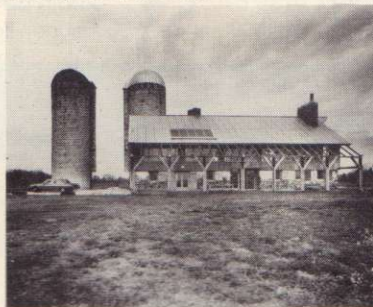
**36 News reports**

President Carter's 1980 budget promises little extra money to states and localities. DOE may relax its insistence on performance standards for building energy design to allow for ASHRAE 90-75. California's Governor would like to abolish the State Board of Architectural Examiners.

**39 Human settlements: world news**

**44 Buildings in the news**

Eight buildings take honors in the Design Awards program sponsored by the Connecticut Society of Architects.



**47 Required reading**

**ARCHITECTURAL BUSINESS**

**65 Building activity**

**Dodge/Sweet's construction outlook, 1979: first update**

George A. Christie revises an earlier set of predictions for this year's activity patterns.

**69 Office management**

**Barrier-free design begins to react to legislation, research**

Architect and teacher Edward Steinfeld comments on current trends in barrier-free design, based on recent legislation and ANSI activities.

**73 Business development**

**Some tips on evaluating renovation projects for office use**

Architect Herbert McLaughlin cautions that not every warehouse can be successfully reincarnated as an office building, and he tells how to assess potential—or lack of it.