


## BUILDING TYPES STUDY 526

- 91 Record interiors of 1979**  
An expanded number of 21 awards reflects the growing interest by the profession, with a dazzling array of proficiency.
- 92 Architects' own offices, Minneapolis**  
by The Design Consortium
- 94 Architects' own offices  
Kansas City, Missouri**  
by Patty Berkebile Nelson Associates
- 96 Designers' own offices  
Coconut Grove, Florida**  
by Dennis Jenkins and Michael Rada
- 97 The Balarus Machinery Offices  
New York City**  
by Hobart Betts
- 98 The Walner law offices, Chicago**  
by Stanley Tigerman & Associates
- 100 IBM offices, Boston**  
by Stull Associates
- 101 Healthworks restaurant, New York City**  
Walker/Group, Inc.
- 102 The Katonah Station Restaurant  
Katonah, New York**  
by Myron Goldfinger
- 104 Discovery Associates showroom  
New York City**  
by Gamal El-Zoghby
- 106 Nyborg Nelson Restaurant  
New York City**  
by Gordon Kahn
- 107 Au Bon Pain Bakery  
Burlington, Massachusetts**  
by Gordon Kahn
- 108 Robert Loren store, Miami**  
by Dennis Jenkins Associates and  
H. Carlton Decker
- 109 Apartment, New York City**  
by Charles Boxenbaum
- 110 Graham house, Dallas, Pennsylvania**  
Bohlin Powell Brown
- 111 Tighe home office, New York City**  
Gamal El-Zoghby
- 112 Apartment, New York City**  
by Gamal El-Zoghby
- 114 Bennett family room, New York City**  
by Gamal El-Zoghby
- 115 The Museum of Modern Art  
auditorium, New York City**  
by Buck/Caine
- 116 Community Center, New York City**  
by Vitto and Robinson
- 118 Twentieth Century-Fox  
data processing facility  
and commissary, Los Angeles**  
by Gensler Associates

## FEATURES

- 121 The artful design  
of a non-building**  
The Larkspur Ferry Terminal services commuters traveling between Marin County and San Francisco. The design is highlighted by a triangular-shaped steel space frame that creates an exciting space and functions extremely well for ferry docking and maintenance.
- 
- 125 A program for energy conservation  
in building design, by Donald Watson**  
Many recent studies of energy conservation focus on particular technologies that can, or may, help solve the problems of energy waste and overuse in buildings. But what do they all really mean, and when will we see results from their actually being used? Donald Watson, a distinguished researcher in the field, helps answer these questions in an essay that provides a general view of the energy scene today.
- 129 A Neo-Richardson romanesque  
cathedral by Edward Larrabee Barnes**  
This cathedral in Burlington, Vermont could be no bigger than yesterday's parish church, yet as the seat of the bishop of the local diocese it has to express its primacy within today's hierarchy of church buildings. As a substitute for sheer size, Barnes with his customary elegance has carefully chosen stylistic and symbolic means adapted from churches of the past to establish his cathedral's importance in today's religious world.
- 137 Buffalo's new bus stop**  
The Metropolitan Transportation Center, by Cannon Design, Inc., efficiently splices office functions and terminal facilities in an airy, festive setting.

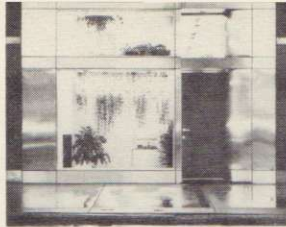
## ARCHITECTURAL ENGINEERING

- 141 The open plan is scrutinized in a  
pioneering survey on offices**  
An insight into the current status of the open-plan office, a prediction from designers and executives responsible for office planning that it will be even more important in the next 10 years, and a finding that workers would like to have much more input into the design of their offices, are just a few of the fascinating results of a recent survey conducted for Steelcase by Louis Harris & Associates, Inc.
- 149 Product reports**
- 151 Office literature**
- 155 Office notes**
- 206 Classified advertising**
- 214 Advertising index**
- 217 Reader service inquiry card**

## NEXT MONTH IN RECORD

### Building Types Study: Shopping Centers

Oceans of blacktop, poor site planning, bad graphics, tasteless display . . . all the signs of design neglect that have vexed too many regional shopping centers in the past are giving way to more sympathetic, sophisticated solutions. Developers, architects and consumers all benefit. Four case studies will show how.



Cover: Architects' own offices  
Minneapolis, Minnesota  
Architects: Design Consortium  
Photographer: Norman McGrath

**EDITOR**

WALTER F. WAGNER, JR., AIA

**MANAGING EDITOR**

HERBERT L. SMITH, JR., AIA

**SENIOR EDITORS**

ROBERT E. FISCHER  
MILDRED F. SCHMERTZ, FAIA

**ASSOCIATE EDITORS**

GERALD ALLEN  
GRACE M. ANDERSON  
BARCLAY F. GORDON  
CHARLES E. HAMLIN  
CHARLES K. HOYT, AIA  
WILLIAM MARLIN  
JANET NAIRN

**PRODUCTION EDITOR**

ANNETTE K. NETBURN

**DESIGN**

ALEX H. STILLANO, Director  
ALBERTO BUCCHIANERI, Senior associate  
ANNA-MARIA EGGER, Associate  
MURIEL CUTTRELL, Illustration  
J. DYCK FLEDDERUS, Illustration  
JAN WHITE, Consultant

**EDITORIAL CONSULTANTS**

EDWARD LARRABEE BARNES, FAIA  
JONATHAN BARNETT, AIA, Urban design  
GEORGE A. CHRISTIE, JR., Economics  
ERNEST MICKEL, Hon. AIA, Washington  
PAUL RUDOLPH, FAIA  
Foreign architecture  
L'Architecture d'Aujourd'hui, Paris

**MCGRAW-HILL WORLD NEWS**

RALPH R. SCHULZ, Director  
9 domestic and 10  
international news bureaus:  
Bonn, Brussels, Buenos Aires,  
London, Milan, Moscow, Paris,  
Singapore, Tokyo, Toronto.

**SALES MANAGER**

ROBERT G. KLIESCH

**CIRCULATION DIRECTOR**

RICHARD H. DI VECCHIO

**BUSINESS MANAGER**

JOSEPH R. WUNK

**DIRECTOR OF MARKETING SERVICES**

ELIZABETH HAYMAN

**PUBLISHER**

BLAKE HUGHES

**THE RECORD REPORTS**

**13 Editorial**

Bringing all people in closer touch  
with architecture

**4 Letters/calendar**

**33 News in brief**

Short items of major  
national interest.

**34 News reports**

The Department of Energy has published  
its preliminary set of standards for  
energy conservation in new buildings  
and is conducting hearings for the  
building industry. The National Trust  
for Historic Preservation has  
established a \$1-million revolving fund  
for the rescue of endangered buildings.

**38 Human settlements/world news**

**47 Buildings in the news**

Academic Center, Boston University.  
Central Research Library, Dallas.  
Federal Correctional Institution,  
Bastrop, Texas. Operations and  
Maintenance Building, Multnomah  
County, Oregon. Police Services and  
Fire Administration Building,  
Mountain View, California.



©Sirm Sweezy

**51 Required reading**

**ARCHITECTURAL BUSINESS**

**67 Building financing**

**Federal Reserve actions will  
impact the 1979 building outlook**  
Phillip E. Kidd, director of  
economic research, McGraw-Hill  
Information Systems Company,  
outlines the main impact of recent  
Federal Reserve actions on  
the cost of, and growth of, credit.

**69 Office management**

**Programming, predilections,  
and design**  
San Francisco architect  
Herbert McLaughlin,  
long a proponent of  
improved programming methods,  
offers in this essay some  
comments on design prejudice.

