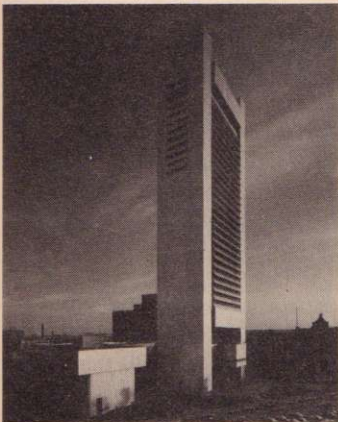


FEATURES

95 Community Federal Center
by **Hellmuth, Obata & Kassabaum**
Carrying a high degree of urbanity to the St. Louis suburbs, this large office building is a surprising and varied response from a popular building type. The seemingly complicated configuration has been produced by surprisingly simple means.

101 Four buildings by Bertram Goodhue
by **Richard Oliver**
Bertram Goodhue is known for two very different kinds of things: for designing Gothic churches and for his modernistic designs for the Nebraska State Capitol at Lincoln. He stands out today, over fifty years after his death, as an appealing figure, because his concerns seem so much to resemble our own.

109 Designing everything down to the last detail
The Federal Reserve Bank of Boston, designed by Hugh Stubbins and Associates, Inc., is a well thought through building, which has been highly controlled, clarified and refined. The architectural firm was in charge of the entire job including interiors, landscape and graphics—"total design" for a major skyscraper.



©Nick Wheeler

119 Two interiors
Stanford University's neglected old gymnasium, redone by Barry Brukoff, and the rustic Bear Mountain inn, renovated by Joseph Tonetti, are restored to life. Original masonry, imaginative lighting, and rich use of color are combined in these elegant new interiors.

BUILDING TYPES STUDY 522

129 International Resorts
A survey of new work overseas in a field that is risky but glamorous and continues to offer architects extraordinary challenges and opportunities

132 Regent of Fiji, Islands of Fiji
Black O'Dowd & Associates, architects.

136 Flaine, French Alps
Marcel Breuer & Associates, architects.

140 Palmas del Mar, Puerto Rico
Esteban Padilla, architect.



142 Babin Kuk, Dubrovnik, Yugoslavia,
Edward Durell Stone Associates, architects.

ARCHITECTURAL ENGINEERING

153 Product reports

155 Office literature

175 Office Notes

182 Classified advertising

184 Advertising index

187 Reader service inquiry card

COMING NEXT MONTH

Building Types Study: Low-rise housing

Current construction forecasts indicate a healthy increase in the apartment market for this year over 1977. Buyers' preferences, too, for "low-rise" schemes over tall and impersonal towers are beginning to be felt—partly because relatively fewer people can now afford a single-family house, and so when they look for an apartment they want something that seems to approximate its feeling, something that perhaps even looks "traditional" and offers some of the amenities of the old-fashioned freestanding house. The October Building Types Study will show how some of our best architects have begun to address this expanding market, and how they are meeting its challenges.



Palmas del Mar Hotel
San Juan, Puerto Rico
Architect: Esteban Padilla

EDITOR

WALTER F. WAGNER, JR., AIA

MANAGING EDITOR

HERBERT L. SMITH, JR., AIA

SENIOR EDITORS

ROBERT E. FISCHER

MILDRED F. SCHMERTZ, FAIA

ASSOCIATE EDITORS

GERALD ALLEN

GRACE M. ANDERSON

BARCLAY F. GORDON

CHARLES E. HAMLIN

CHARLES K. HOYT, AIA

WILLIAM MARLIN

JANET NAIRN

PRODUCTION EDITOR

ANNETTE K. NETBURN

DESIGN

ALEX H. STILLANO, Director

ALBERTO BUCCHIANERI, Senior associate

ANNA-MARIA EGGER, Associate

MURIEL CUTTRELL, Illustration

J. DYCK FLEDDERUS, Illustration

JAN WHITE, Consultant

EDITORIAL CONSULTANTS

EDWARD LARRABEE BARNES, FAIA

JONATHAN BARNETT, AIA, Urban design

GEORGE A. CHRISTIE, JR., Economics

ERNEST MICKEL, Hon. AIA, Washington

PAUL RUDOLPH, FAIA

Foreign architecture

L'Architecture d'Aujourd'hui, Paris

McGRAW-HILL WORLD NEWS

RALPH R. SCHULZ, Director

9 domestic and 10

international news bureaus:

Bonn, Brussels, Buenos Aires,

London, Milan, Moscow, Paris,

Singapore, Tokyo, Toronto.

SALES MANAGER

ROBERT G. KLIESCH

CIRCULATION DIRECTOR

RICHARD H. DI VECCHIO

BUSINESS MANAGER

JOSEPH R. WUNK

DIRECTOR OF MARKETING SERVICES

ELIZABETH HAYMAN

PUBLISHER

BLAKE HUGHES

THE RECORD REPORTS

13 Editorial

Too many troubles in too many buildings:
Why don't we start talking
about what to do?

4 Letters/calendar

33 News in brief

Short items of major
national interest.

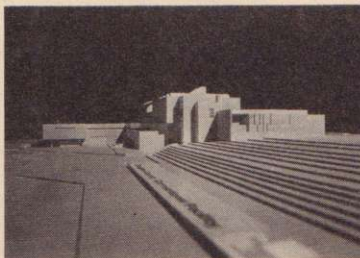
34 News reports

Bar association offers draft
of model procurement code. Twelve
teams submit plans for Washington's
Pennsylvania Avenue. San Francisco
breaks ground for Yerba Buena
convention center. In Philadelphia,
the late Bellevue-Stratford will
be restored as the Fairmont Hotel.

37 Human settlements: world news

39 Buildings in the news

IBM office tower, New York City.
El Paso Tower, Houston. L.D.
Morrison, Sr., Police Academy,
Houston. Douglas County Correctional
Center, Omaha, Nebraska.



43 Required reading

ARCHITECTURAL BUSINESS

65 Office management

Consultant profile: the food service planner

The Cleveland Clinic's six-year
renovation of its food service
operation is examined in terms of the
food service consultant's contribution.

69 Business development Identifying your markets of the future

Management consultant Weld Coxe
offers some advice on locating—
and managing—building markets
down the road.

73 Legal perspectives Scrutinize indemnification clauses in owner-architect contracts

Arthur Kornblut advises caution
on legal risk shifting devices
requested by clients.