

## FEATURES

### 93 New directions for an established firm

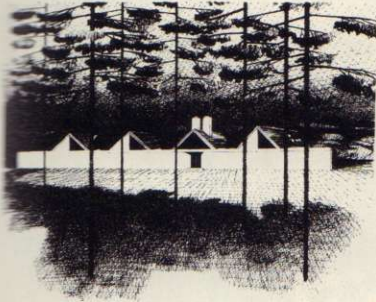
The recent experiences of Marquis Associates typify changes occurring in offices in a time of new approaches and responsibilities for the profession. An article by Robert Marquis and associate Cathy Simon explains some of their new work in the context of their experience.

### 103 A Paris accord

The new Australian Embassy in Paris, by Harry Seidler & Associates in consultation with Marcel Breuer and Pier Luigi Nervi, considerably picks up on the civility and flair of a great city.

### 105 Five new designs by Hugh Jacobsen

A portfolio of projects by one of America's premier residential designers whose search for expression has taken him to the forms of the past.



## BUILDING TYPES STUDY 524

### 121 Existing structures offer a helping hand to health care

A report on the first Health Facility Reuse Conference, held by the Health Services Planning and Design Program, the Graduate School of Architecture and Planning, Columbia University.

### 122 Moshasuck Square Arcade, Providence, Rhode Island

Steffian-Bradley Associates, architects

### 126 Brattleboro Retreat, Brattleboro, Vermont, adds a kitchen and dining facility with great finesse

Perry, Dean, Stahl & Rogers, architects

### 130 Sharon Hospital, Sharon, Connecticut, rearranges and reclads for flexibility

Arneill-Kagen Associates, architects

### 132 Lutheran Medical Center, Brooklyn, New York, was a plain old, well-built factory

Rogers, Butler, Burgun & Shahine, architects

### 133 Jersey City Health Center, New Jersey, recasts an out-moded hospital floor for children

The Hillier Group, architects

### 134 Neonatal Intensive Care Unit, Cornell Medical Center, New York

Skidmore, Owings & Merrill, architects

### 136 Massachusetts General Hospital, Boston, adapts used-up storerooms for an array of bed-care needs

Perry, Dean, Stahl & Rogers, architects

### 137 Dental School, Continuing Education Facility, University of Oregon Health Sciences Center, Portland, Oregon

Zimmer Gunsul Frasca, architects

### 138 Cumberland County Medical Center, Manor Nursing Home, Bridgeton, New Jersey, alters, adds to, and unifies an existing complex

Architects II, architects

## ARCHITECTURAL ENGINEERING

### 141 A new design method for the fire protection of exterior exposed steel

The American Iron and Steel Institute is introducing a new, rational approach that allows architects/engineers to omit conventional fireproofing by locating columns and spandrels—or by shielding them—so that in a fire, critical steel temperatures would never be reached.

### 149 Product reports

### 151 Office literature

### 208 Classified advertising

### 210 Advertising index

### 213 Reader Service inquiry card

## NEXT MONTH IN RECORD

### Building Types Study: Federal Architecture—An agenda for quality

What is the Federal Government doing, or what should it be doing, to make design quality an integral function of its policies, programs guidelines, and procedures? This issue of RECORD will assess initiatives underway in the General Services Administration, the Veterans Administration, the Department of the Navy, the Corps of Engineers, the Department of Housing and Urban Development—and some 20 other agencies entrusted with construction responsibilities or with financially assisting construction at the local level. The Administration's Urban Policy, and its evolving Cultural Policy, will also be addressed, as will the impact of recent and proposed legislation bearing on the humanity, harmony, and convenience of the physical environment.





The new Australian Embassy Paris, France  
Architect: Harry Seidler & Associates  
Photographer: Max Dupain

**EDITOR**

WALTER F. WAGNER, JR., AIA

**MANAGING EDITOR**

HERBERT L. SMITH, JR., AIA

**SENIOR EDITORS**

ROBERT E. FISCHER

MILDRED F. SCHMERTZ, FAIA

**ASSOCIATE EDITORS**

GERALD ALLEN

GRACE M. ANDERSON

BARCLAY F. GORDON

CHARLES E. HAMLIN

CHARLES K. HOYT, AIA

WILLIAM MARLIN

JANET NAIRN

**PRODUCTION EDITOR**

ANNETTE K. NETBURN

**DESIGN**

ALEX H. STILLANO, Director

ALBERTO BUCCHIANERI, Senior associate

ANNA-MARIA EGGER, Associate

MURIEL CUTTRELL, Illustration

J. DYCK FLEDDERUS, Illustration

JAN WHITE, Consultant

**EDITORIAL CONSULTANTS**

EDWARD LARRABEE BARNES, FAIA

JONATHAN BARNETT, AIA, Urban design

GEORGE A. CHRISTIE, JR., Economics

ERNEST MICKEL, Hon. AIA, Washington

PAUL RUDOLPH, FAIA

Foreign architecture

L'Architecture d'Aujourd'hui, Paris

**MCGRAW-HILL WORLD NEWS**

RALPH R. SCHULZ, Director

9 domestic and 10

international news bureaus:

Bonn, Brussels, Buenos Aires,

London, Milan, Moscow, Paris,

Singapore, Tokyo, Toronto.

**SALES MANAGER**

ROBERT G. KLIESCH

**CIRCULATION DIRECTOR**

RICHARD H. DI VECCHIO

**BUSINESS MANAGER**

JOSEPH R. WUNK

**DIRECTOR OF MARKETING SERVICES**

ELIZABETH HAYMAN

**PUBLISHER**

BLAKE HUGHES

## THE RECORD REPORTS

### 13 Editorial

On training young graduates:  
Some useful "how-to" from NCARB

### 4 Letters/calendar

### 33 News in brief

Short items of major  
national interest.

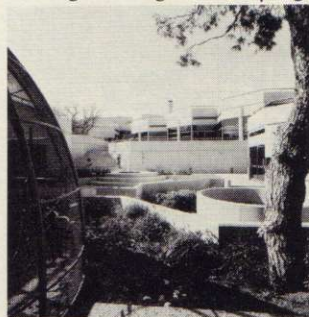
### 34 News reports

GSA corruption scandals, though not touching on A-E performance, may lead to administrative tightening up. Museum of Modern Art opens Lutyens retrospective. Solar collectors will be installed at the White House and on two House office buildings.

### 37 Human settlements/world news

### 39 Buildings in the news

Chicago chapter, AIA, honors 18 buildings in design awards program.



## ARCHITECTURAL BUSINESS

### 65 Building activity

#### Dodge/Sweet's Construction Outlook for 1979

The forecast for next year shows a peaking of activity in currently strong building types, as the building industry approaches a period of greater stability.

### 73 Legal Perspectives

#### Proprietorship, partnership, corporation? Weighing the alternatives.

Attorney Arthur T. Kornblut reviews some of the numerous unrelated factors that can affect the legal format of firms.

### 75 Building costs

A Dodge Building Cost Services survey shows U.S. construction costs to now stand at 6.8 per cent above this period last year.