

FEATURES

95 Yale Center for British Art

In his final building, completed after his death, Kahn, according to Yale History of Art professor Vincent Scully, "arrived at a kind of order which was itself not far from the old classicizing mode: static, trabeated, and laconic. . . . All movement, all voices, all color, are outside and around the British Center, like the reflections in its window panes. Avoiding speech, it is the wordless image of Kahn's deep constructor's soul."

105 A theatrical approach to shopping center remodeling

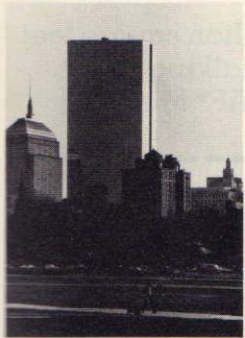
The remodeling of the Stanford Shopping Center in Palo Alto, California, has just been completed. The design thrust concentrates on creating a lively vibrant shopping complex from a 900-foot-long existing mall by predominantly non-structural architectural devices. Architects are Bull Field Volkman Stockwell.

109 Two houses by Charles Moore: contrasted

Designed for clients with dissimilar needs, each house evokes its owners' beliefs, fantasies and feelings in forms shaped by Moore's mastery of style.

117 Some reflections on the John Hancock Tower

A lot of life, fortune, and sacred honor is tied up in this 60-story glass-sheathed skyscraper by I. M. Pei & Partners.



George Cerna

BUILDING TYPES STUDY 503

127 Industrial buildings

To the client planning an industrial building, nothing is quite as meaningful as initial cost and speed of construction. But a growing number of owners are going one step farther, requiring building solutions that—at no extra cost—also respond to broader, long-range goals of environmental soundness and improved working conditions.

128 Hewlett-Packard Company Santa Rosa, California

John Carl Warnecke & Associates, architects.

130 Sears Distribution Center Elk Grove, Illinois

Skidmore, Owings & Merrill, architects.

132 Windsor Winery Healdsburg, California

Roland/Miller/Associates, architects.

134 Saginaw Road Development Plan Midland, Michigan BP Oil Corporation

Marcus Hook, Pennsylvania
HOK Associates, Inc., architects.

136 The Logan Leader/News Democrat Russellville, Kentucky

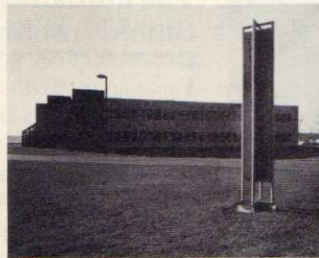
Ryan, Cooke and Zuern Associates, architects.

138 Public Service Facility Sterling Heights, Michigan

Straub, Van Dine, Dziurman, architects.

140 Joseph E. Seagram & Sons, Inc. Des Plaines, Illinois

Pasanella & Klein, architects.



Robert Thall

142 Central Power House Utica, New York

Rogers, Butler & Burgun, architects.

ARCHITECTURAL ENGINEERING

143 Parking deck saves money with tube columns and weathering steel

In downtown Detroit, a "bare" steel, six-level parking deck used tubular columns for structural efficiency and to avoid guards required for wide-flange columns. The weathering steel exterior eliminated need for painting hard-to-reach areas.

149 Product reports

151 Office literature

217 Semi-annual index

215 Classified advertising

220 Advertising index

225 Reader service inquiry card

NEXT MONTH IN RECORD

Building Types Study: Religious buildings

Religious buildings offer to the architect some of the most challenging design problems he or she ever encounters, with rewards as great as the perils. Next month's Building Types Study features a rich collection of churches and church-related buildings from across the United States and from foreign countries as well. It gives a good look at the current state of the art of design as applied to programs for religious buildings.



Cover: Yale Center for British Art
New Haven, Connecticut
Architects: Louis I. Kahn/Pellechia and Meyers
Photographer: Paul David Birnbaum

EDITOR

WALTER F. WAGNER, JR., AIA

MANAGING EDITOR

HERBERT L. SMITH, JR., AIA

SENIOR EDITORS

ROBERT E. FISCHER
MILDRED F. SCHMERTZ, FAIA

ASSOCIATE EDITORS

GERALD ALLEN
GRACE M. ANDERSON
BARCLAY F. GORDON
CHARLES E. HAMLIN
CHARLES K. HOYT, AIA
WILLIAM MARLIN

ASSISTANT EDITOR

JANET NAIRN

PRODUCTION EDITOR

ANNETTE K. NETBURN

DESIGN

ALEX H. STILLANO, Director
ALBERTO BUCCHIANERI, Associate
ANNA-MARIA EGGER, Assistant
MURIEL CUTTRELL, Illustration
J. DYCK FLEDDERUS, Illustration
JAN WHITE, Consultant

EDITORIAL CONSULTANTS

EDWARD LARRABEE BARNES, FAIA
JONATHAN BARNETT, AIA, Urban design
GEORGE A. CHRISTIE, JR., Economics
ERNEST MICKEL, Hon. AIA, Washington
PAUL RUDOLPH, FAIA

Foreign architecture:

L'Architecture d'Aujourd'hui, Paris

McGRAW-HILL WORLD NEWS

RALPH R. SCHULZ, Director
9 domestic and 10
international news bureaus:
Bonn, Brussels, Buenos Aires,
London, Milan, Moscow, Paris,
Singapore, Tokyo, Toronto.

SALES MANAGER

LOUIS F. KUTSCHER

CIRCULATION DIRECTOR

HUGH S. DONLAN

ASSISTANT BUSINESS MANAGER

JOSEPH R. WUNK

ASSISTANT TO THE PUBLISHER

ELIZABETH HAYMAN

PUBLISHER

BLAKE HUGHES

THE RECORD REPORTS

13 Editorial

Solar energy: Some hopes
and some concerns

4 Letters/Calendar

33 News in brief

Short items of
major national interest.

34 News reports

Carter Administration's energy
program offers an assortment
of standards and financial
incentives for building. Richard
Meier takes \$25,000 Reynolds
award for Bronx Developmental
Center. The East German
government restores Walter Gropius's
Bauhaus building in Dessau.

37 Human settlements: world news

41 Buildings in the news

The AIA cites 17 buildings
in its 1977 Honor Awards Program.



45 Required reading

215 Office notes

ARCHITECTURAL BUSINESS

65 Construction management Regulatory codes: one firm's check list for industrial projects

Joseph E. Compton, vice president
and director, Industrial Division of
Smith, Hinchman & Grylls, offers a
systematic approach to identifying
potential code infractions.

69 Legal perspectives A basic guide to pitfalls in foreign contracts

Chicago attorney
Philip F. Purcell outlines
some common problems encountered
in contracts with overseas clients.

71 Business development Writing for marketing impact: letters, brochures, proposals

Communications consultant Stephen A.
Kliment reminds design professionals
that in marketing communications,
"It's not creative, unless it sells."