

FEATURES

**101 U. S. Embassy Building
Tokyo, Japan**

Cesar Pelli, partner for design at Gruen Associates, has achieved real eminence for an impressive collection of large, sleek and elegant buildings. Having become dean of the architecture school at Yale and having received the commission for the expansion of the Museum of Modern Art in New York, Pelli seems destined to stand in the first rank of American designers. The new U.S. Embassy in Tokyo shows why.

107 The growing of grids

Fumihiko Maki's Central Building for Japan's Tsukuba University houses the departments of both art and physical education within a luminous lay-up of steel frames, glass blocks, and lofty spaces.



Osamu Murai

113 A large house of varied spaces

A multi-faceted form for this house in southern California evolved as a visual expression of the region's indoor/outdoor lifestyle while emphasizing family privacy. High-volumed spaces and clerestory windows permit light to diffuse throughout the interiors.

BUILDING TYPES STUDY 500

117 Forty years of American architecture

The numeral 500 signals that RECORD has been true this many times to an editorial idea which first appeared in January 1937—to publish every month a collection of buildings of the same type in response to the volume of construction predicted for that type. Stores, industrial buildings, schools, hospitals and housing have been among the types most frequently featured. Taken as a whole, the 499 preceding Building Types Studies are a remarkable collection of examples of the best of the everyday architecture built in the United States in the last forty years. This 500th Building Types Study is a three-part analysis of this era.

117 Introduction

118 Magic, nostalgia and a hint of greatness in the workaday world of the Building Types Study

A six-part article by Charles W. Moore and Richard B. Oliver.



Balthazar Korab

138 The Building Types Study as a not-too-clouded crystal ball

RECORD editor Charles K. Hoyt demonstrates the studies' past ability to predict future developments.

ARCHITECTURAL ENGINEERING

147 Building automation: what it does, what its benefits are, how the economics fare

Engineer Donald Ross clears away some of the mystery as well as the mystique of building automation systems, explaining the terminology and how the equipment is applied to mechanical systems.

The author, a partner in the consulting engineering firm, Jaros, Baum & Bolles, discusses both advantages and what to watch out for.

155 Product reports

157 Office literature

220 Classified advertising

222 Advertising index

225 Reader service inquiry card

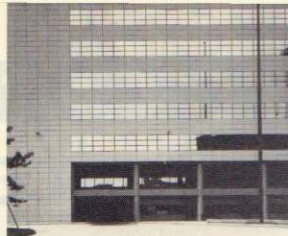
NEXT MONTH IN RECORD

Building Types Study: Housing the Aging

A new examination of the ways in which older persons are housed is inevitable with the coming growth of such facilities—ranging from special apartments to medical facilities for advanced deterioration.

Examples will include:

1. The Hebrew Home for the Aged, New York City, by architects Gruzen & Partners.
2. The Givens Estate, Ashville, North Carolina, by architect William Morgan.
3. The Florida Christian Home, Jacksonville, Florida, by architects Freedman/Clements/Rumpel.
4. Monument East Housing, Baltimore, Maryland, by architects Conklin & Rossant.
5. Grundy Tower, Bristol, Pennsylvania, by architect Louis Sauer.
6. The CABS Nursing Home, New York City, by architect William Morgan.



Cover: U. S. Embassy Building
Tokyo, Japan
Architects: Cesar Pelli of Gruen Associates
Photographer: Mitsuo Matsuoka

EDITOR

WALTER F. WAGNER, JR., AIA

MANAGING EDITOR

HERBERT L. SMITH, JR., AIA

SENIOR EDITORS

ROBERT E. FISCHER
MILDRED F. SCHMERTZ, FAIA

ASSOCIATE EDITORS

GERALD ALLEN
GRACE M. ANDERSON
BARCLAY F. GORDON
CHARLES E. HAMLIN
CHARLES K. HOYT, AIA
WILLIAM MARLIN

ASSISTANT EDITOR

JANET NAIRN

PRODUCTION EDITOR

ANNETTE K. NETBURN

DESIGN

ALEX H. STILLANO, Director
ALBERTO BUCCHIANERI, Associate
ANNA-MARIA EGGER, Assistant
MURIEL CUTTRELL, Illustration
J. DYCK FLEDDERUS, Illustration
JAN WHITE, Consultant

EDITORIAL CONSULTANTS

EDWARD LARRABEE BARNES, FAIA
JONATHAN BARNETT, AIA, Urban design
GEORGE A. CHRISTIE, JR., Economics
ERNEST MICKEL, Hon. AIA, Washington
PAUL RUDOLPH, FAIA

Foreign architecture:
L'Architecture d'Aujourd'hui, Paris

McGRAW-HILL WORLD NEWS

RALPH R. SCHULZ, Director
9 domestic and 10
international news bureaus:
Bonn, Brussels, Buenos Aires,
London, Milan, Moscow, Paris,
Singapore, Tokyo, Toronto.

SALES MANAGER

LOUIS F. KUTSCHER

CIRCULATION DIRECTOR

HUGH S. DONLAN

ASSISTANT BUSINESS MANAGER

JOSEPH R. WUNK

ASSISTANT TO THE PUBLISHER

ELIZABETH HAYMAN

PUBLISHER

BLAKE HUGHES

THE RECORD REPORTS

13 Editorial

A new start for housing:
what we need most are
some new approaches

4 Letters/calendar

33 News briefs

34 News reports

Housing Secretary Patricia Harris
has picked two builders and a
city development official for top
jobs at HUD. A Supreme Court
decision increases the authority of
architects, owners and general
contractors over the use of
prefabricated components and sub-
systems. The GSA will test
a new architect-engineer selection
process that calls for the
preparation of conceptual designs
by three or more firms.

37 Human settlements: world news

42 Buildings in the news

Society of American Registered
Architects honor awards program.
Puerto Rico Chapter, American
Institute of architects
honor awards program.



45 Required reading

175 Office notes

ARCHITECTURAL BUSINESS

67 Legal Perspectives

**Document A201 strives to clarify
—not change—the roles of
architect, contractor and owner**

Arthur T. Kornblut concludes a
two-part discussion of the AIA
General Conditions of the
Contract for Construction.

71 Building costs

Materials prices and wage
increases are updated in the
Dodge Building Cost Indexes

73 Building financing

**Creating a healthy climate for
construction requires a delicate
balance by the Administration
and the Federal Reserve.**

RECORD begins a quarterly
review of monetary policies and
economic conditions affecting
construction starts.

75 Office management

**75 COFPAES renews its
“costs and audits” argument**

Washington reporter William Hickman
describes the current debate
between professional design groups
and the government on allowable
costs on Federal jobs.

**77 Planning your personal
financial strategy: part II
the high-income architect**

In his second and final article on
personal investment, Mark Pollard
of Merrill Lynch, Pierce, Fenner
& Smith, Inc., suggests a
capital growth program for a
high-income firm-owner.