

Architectural Design 56 4-1986

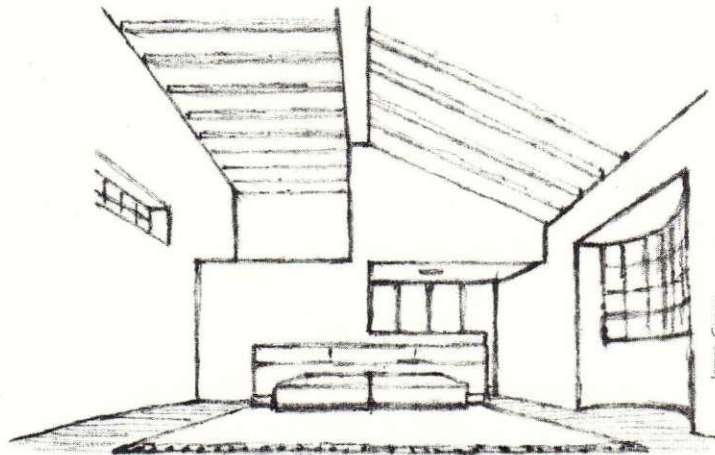
Editorial Offices: 42 Leinster Gardens, London W2 Telephone: 01-402 2141 Subscriptions: 7/8 Holland Street London W8

EDITOR

Dr Andreas C Papadakis

HOUSE EDITOR: Frank Russell

CONSULTANTS: Catherine Cooke, Dennis Crompton, Terry Farrell,
Kenneth Frampton, Charles Jencks, Leon Krier, Robert Maxwell, Demetri Porphyrios, Colin Rowe, Derek Walker



AHRENDS BURTON & KORALEK
Thames Centre Project 10

A major visionary city intervention which failed to win the day, now redundant in view of Terry Farrell's Charing Cross scheme. Richard Rogers is nevertheless persevering with a new bridge across the Thames, for a Royal Academy exhibition.

JAMES GOWAN

House at Temple Hill, Hampstead 16

A sensitive scheme for a crafted house developed over a long period in close collaboration with the client.

BRUNO MINARDI

Restoration of Gatteo Castle 20

Restoration with minimum intervention, bearing the unmistakable Bruno Minardi imprint.

SIDELL GIBSON PARTNERSHIP

Grand Buildings, Trafalgar Square 24

A controversial solution to a sensitive site following a major international competition. 'It stays the same but is new.'

LEON KRIER

An Architecture of Desire 30

An essay in the context of the publication
Albert Speer: Architecture, together with a glimpse of the Grosse Halle.

ROUND-UP

News Exhibitions and Projects 2 Book Reviews 6

Front Cover: Bruno Minardi – Gatteo Castle Back Cover: Sidell Gibson Partnership – Grand Buildings
Inside Front Cover: Campbell Zogolovitch Wilkinson & Gough – Lincoln Seligman's Studio