

Architectural Design Vol XLIII 8/1973

## CONTENTS

### Cover

'Squatters in India' (See page 494)

483

### Summaries/French

485

### Cosmorama

Pneumatics. Mobile theatre. Graffiti. Solar device.

489

### Owner-builders

William Grindley's chapter from the recently published book 'Freedom to build', edited by John Turner and Robert Fichter, speaking up for dweller control of the housing process.

494

### Squatters in India

Geoffrey Payne describes the Indian pattern of squatter housing which does not occur on the basis of a well-organised invasion of land, but as a cautious process starting with the single young man who, once he finds work in the city, builds a small hut near his relative and his job.

Only then (maybe years later) will he bring his family to live with him.

504

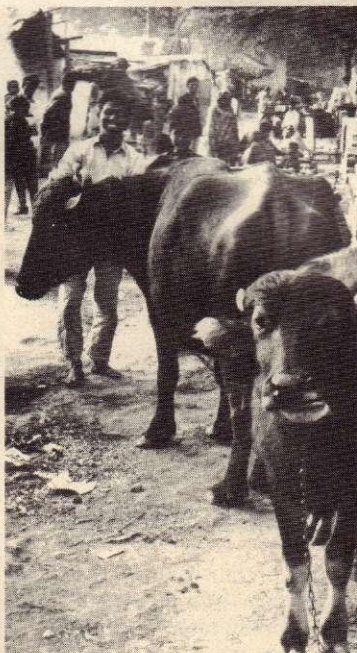
### Squatting in the city

Dr John Pollard talks about the squatters of Kentish Town, London, where squatting is considered as a way of life providing conditions for experimenting with communal living and integrating work with everyday life.

507

### Sector

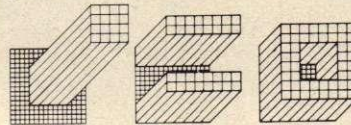
The man-environment paradigm and its paradoxes, by Bill Hillier and Adrian Leaman.



512

### Briefing

Michael Wigginton writes about the rise and metamorphosis of the office building. The demand for office space has led to an industry almost equivalent to the automobile industry, and the financial equations have become critical. Developers' competition for tenants, tenants' rising environmental expectations, and the increasing importance of the symbolic motive, have led to the development of prestige, highly serviced buildings. Costs force many users out by town where cheaper land has led to horizontal office buildings and reinforced the tendency towards deep-plan and open-plan buildings.



520

### Rehab PATH

A report on a project for the rehabilitation of the rapid transit system designed by Arcop Associates, for the Port Authority of New York and New Jersey.

524

### Ruminations on Founder's Court

Alison Smithson describes the construction and locations of *Limes* or *limites romani* - the continuous series of fortifications consisting of castles, walls and earthen ramparts that protected the extremities of the Roman Empire.

530

### Work of Louis Kahn

Certain Roman architects are known... and somehow Kahn follows... whereas we are paddling along in the wake of European straight-line classicism coming through to us via Mies and Le Corbusier.

531

### Round up

Planning: Algeria, Docklands, Isle of Wight, Housing White Paper, RIBA Conference, EDRA 4, Nature and pneumatics, Jerusalem, 110 Bath Rd, Pool play structure, Education centre, Milton Keynes feedback, Magazine spotlight, Exhibitions.

545

### Catalogue

548

### Summaries/German

### Next month

Mostly Los Angeles, Peter Plagens slays the freeways; Bernard Tschumi investigates the 'sanctuaries'; Charles Jencks takes a look at 'ersatz'; Esther McCoy provides guided tours to the architecturally famous houses; Roy Landau considers Disney and Disneyland (as well as Disney World in Florida); and AA students provide lively illustrations and impressions of their recent visit to the West Coast.

